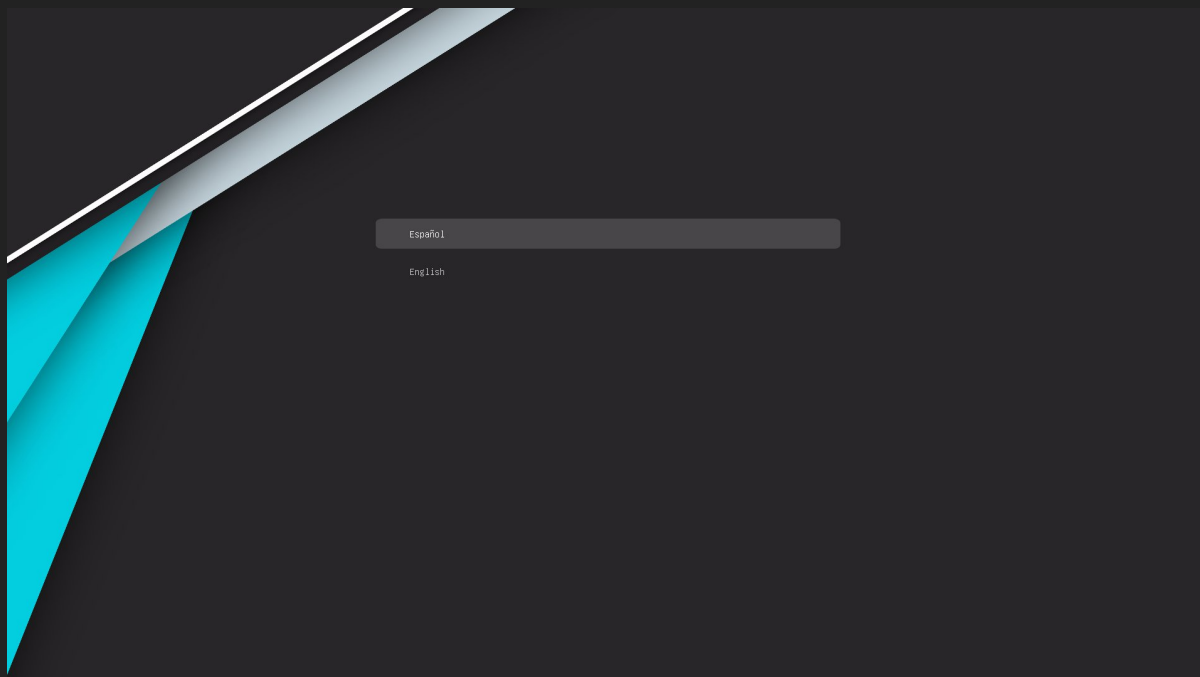
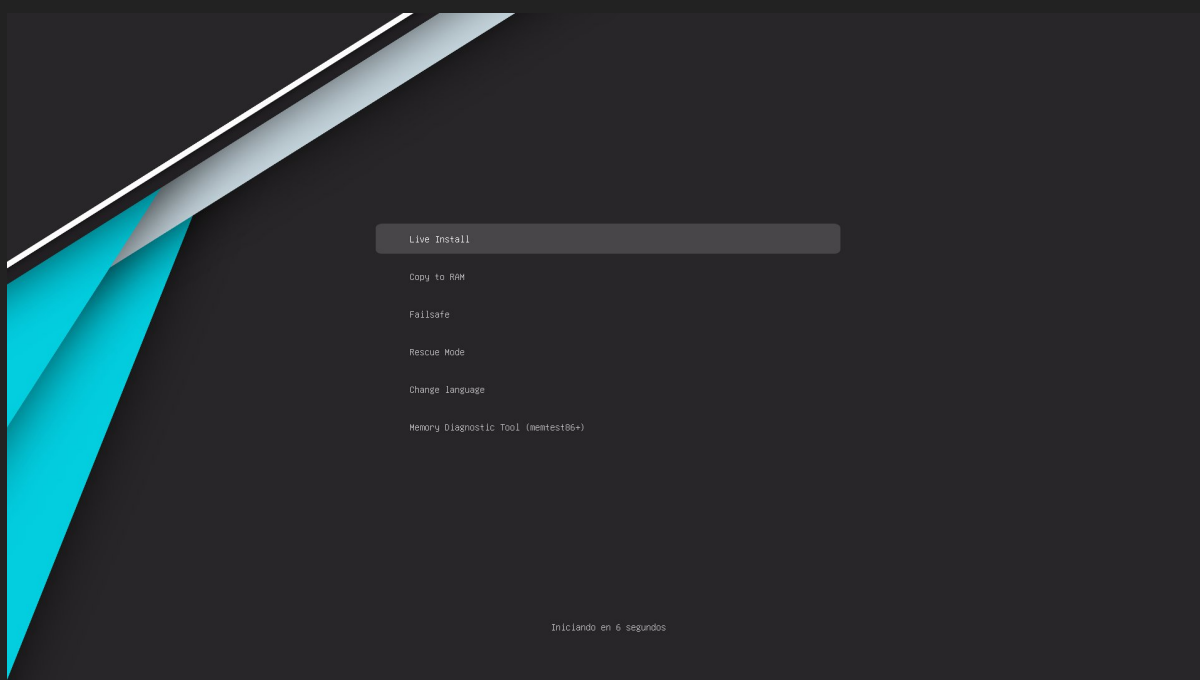


# Synex Installation Manual



## 1. Language Selection at Boot

When starting from the installation media (USB/DVD), you will see the GRUB screen. Here you can choose the **boot language** of the live system. Select English (or your preferred language) to start the environment accordingly.



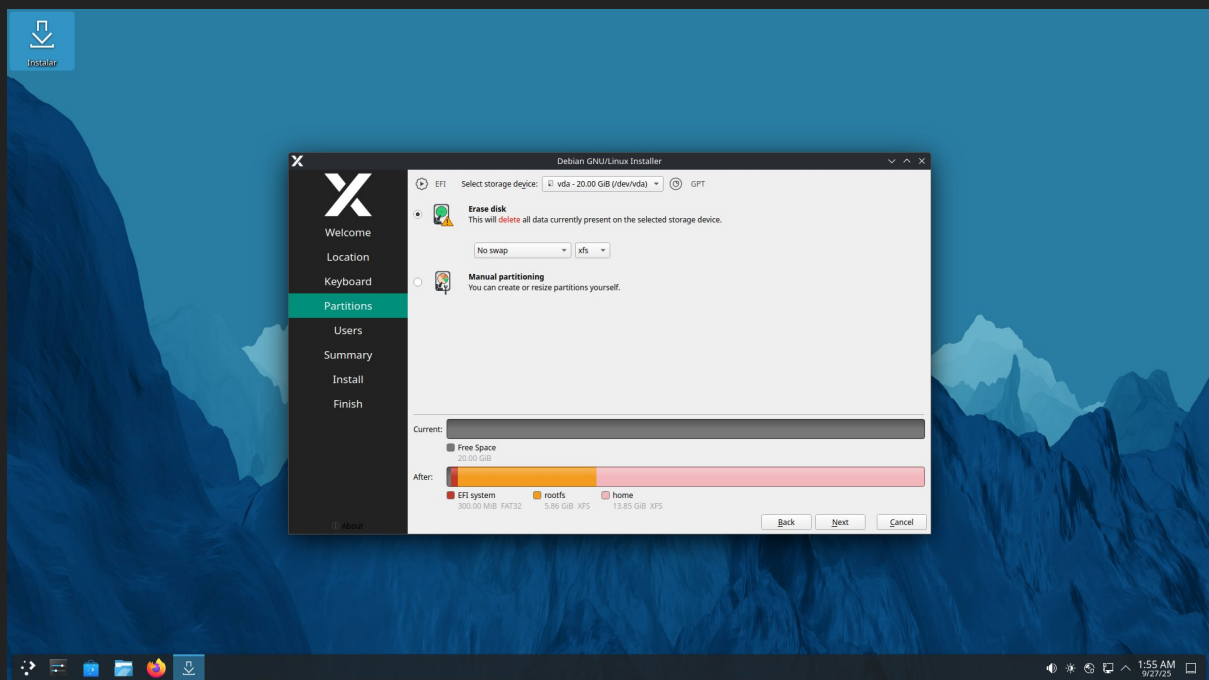
## 2. Live System Boot

In the boot menu, select the option **Live Install**. This will load the full desktop environment without installing anything yet.



## 3. Start the Installer

On the desktop, you will find the Install icon. Double-click it to begin the installation process. If the icon does not appear on the desktop, you can find it by clicking **Start Menu → System → Install**.



## 4. Installation Steps

### Language selection

Choose the language you prefer for both the installer and the final system.

### Location

Select your region and city to configure time automatically.

### Keyboard

Choose the layout that matches your keyboard (e.g., English US or English GB).

## Partitions

You can choose between:

- Erase Disk (automatically creates / and /home partitions).
- Manual Partitioning (ideal if you want to keep other systems or customize partitions).

## Users

Set your username, password, and computer name.

## Summary

A summary will be displayed with all selected options before proceeding.

## Install

The system will copy the files and automatically configure your installation.

## Finish

Once completed, you can restart your computer and start using Synex installed on disk.



## 5. Post-Installation

After installation, we recommend:

- Configure your network connection.
- Run system updates.
- Explore software repositories and Flatpak to install additional applications via Discover.
- Optional: If you have an NVIDIA graphics card, install the synex-nvidia-helper package and run it to install the latest official NVIDIA drivers.